

Springfield Mutual

On December 2004 the Health Department requested that Pajaro/Sunny Mesa take over Operations and Maintenance for Springfield Mutual Water System. Springfield Mutual WS is currently on demand status without storage and the well is located in a flood prone area. This leaves residents vulnerable to water shortages during electrical outages and flood events, which may potentially occur more frequently as a result of climate change. The community's water supply has already been affected by outages and flooding in the past.

Springfield Mutual Water system has not met the drinking water standards specified in the California Domestic Water Quality and Monitoring Regulation since at least 1986, due to chemical analysis indicating that the nitrate content in the water supplied exceeds the permissible levels set by the Federal Drinking Water Regulations. Water containing nitrates in excess of 45 ppm present a risk to health of humans when continuously used for drinking purposes. The current nitrate level hovers around 300 ppm.

Springfield is a disadvantaged community of about 165 residents, many of which are farmworkers. Residents of this community do not have the financial capacity to absorb increased water rates in order to finance the replacement of their contaminated well. Even so, they must frequently travel several miles to purchase bottle water for drinking and cooking purposes.

An application for Construction Funds was submitted in 2008 for Springfield Mutual WS to California Department of Public Health Safe Drinking Water State Revolving Fund, this application was denied. In August 2012 an application for Implementation Projects was submitted to Greater Monterey County Integrated Regional Water Management Plan Project Solicitation 2012 this application was also turned down. An application was submitted March 2013 for Greater Monterey County Integrated Regional Water Management Plan Project Second Round. The District is currently working with CDPH on an application for Planning funds and on an Emergency Application for Grant Funding for an interim solution project to provide bottled water for Springfield Mutual WS.

Springfield Mutual WS Nitrate Results

Nitrate MCL = 45 ppm

Date	Result
3/10/2010	283 ppm
6/9/2010	280 ppm
9/23/2010	226 ppm
12/15/2010	280 ppm
3/10/2011	285 ppm
6/8/2011	306 ppm
9/15/2011	194 ppm
12/8/2011	309 ppm
3/21/2012	293 ppm
6/21/2012	269 ppm
9/12/2012	255 ppm
11/28/2012	272 ppm
3/20/2013	253 ppm

Pajaro Sunny Mesa Svc District
Donald Rosa
136 San Juan Road
Watsonville, CA 95076-5237



MONTEREY BAY ANALYTICAL SERVICES

PRECISION • ACCURACY • DEPENDABILITY

4 Justin Court Suite D, Monterey, CA 93940

831.375.MBAS

montereybayanalytical@usa.net

ELAP Certification Number: 2385

Page 1 of 1

Tuesday, March 26, 2013

Lab Number: AA99135

Collection Date/Time: 3/20/2013 13:30

Sample Collector: EVANS M

Submittal Date/Time: 3/20/2013 15:35

Sample ID 2700771-001

Coliform Designation:

Sample Description: Springfield MWC, Well #1

Analyte	Method	Unit	Result	Qual	PQL	MCL	Date Analyzed	Analyst:
Nitrate as NO3	EPA300.0	mg/L	258		1	45	3/21/2013	DC

Sample Comments:

Report Approved by:

David Holland, Laboratory Director



J.P.
(Signature)

Pajaro Sunny Mesa Svc District
Donald Rosa
136 San Juan Road
Watsonville, CA 95076-5237

4 Justin Court Suite D, Monterey, CA 93940
831.375.MBAS
montereybayanalytical@usa.net
ELAP Certification Number: 2385

Page 1 of 2

Friday, September 30, 2011

Lab Number: AA80211

Collection Date/Time: 9/15/2011 9:10 Sample Collector: VAZQUEZ-VAREL
Submittal Date/Time: 9/15/2011 13:05 Sample ID: 2700771-001

Sample Description: Springfield, Well

Analyte	Method	Unit	Result	Qual	PQL	MCL	Date Analyzed
Alkalinity, Total (as CaCO3)	2320B	mg/L	280		2		9/20/2011
Aluminum, Total	EPA200.8	ug/L	Not Detected		10	1000	9/16/2011
Antimony, Total	EPA200.8	ug/L	Not Detected		1	6	9/16/2011
Arsenic, Total	EPA200.8	ug/L	3		1	10	9/16/2011
Barium, Total	EPA200.8	ug/L	58		10	1000	9/16/2011
Beryllium, Total	EPA200.8	ug/L	Not Detected		1	4	9/16/2011
Bicarbonate (as HCO3-)	2320B	mg/L	342		10		9/22/2011
Bromide	EPA300.0	mg/L	0.55		0.05		9/15/2011
Cadmium, Total	EPA200.8	ug/L	Not Detected		0.5	5	9/16/2011
Calcium	EPA200.7	mg/L	281		0.5		9/22/2011
Carbonate as CaCO3	2320B	mg/L	Not Detected		10		9/15/2011
Chloride	EPA300.0	mg/L	922		1	250	9/15/2011
Chromium, Total	EPA200.8	ug/L	12		2	50	9/16/2011
Color, Apparent (Unfiltered)	2120B	Color Units	Not Detected		3	15	9/15/2011
Copper, Total	EPA200.8	ug/L	Not Detected		4	1300	9/16/2011
Cyanide	QuikChem 10-20	ug/L	Not Detected		10	200	9/19/2011
Fluoride	EPA300.0	mg/L	Not Detected		0.10	2.0	9/15/2011
Hardness (as CaCO3)	2340B	mg/L	1451		10		9/23/2011
Hydroxide	2320B	mg/L	Not Detected		5		9/15/2011
Iron	EPA 200.7	ug/L	Not Detected		10		9/22/2011
Langlier Index (15 deg. C)	2330B		0.67				9/23/2011
Langlier Index (60 deg. C)	2330B		1.24				9/23/2011
Lead, Total	EPA200.8	ug/L	Not Detected		5	15	9/16/2011
Magnesium	EPA200.7	mg/L	182		0.5		9/22/2011
Manganese, Total	EPA 200.7	ug/L	Not Detected		10	50	9/22/2011
MBAS (Surfactants)	5540C	mg/L	Not Detected		0.05	0.50	9/21/2011
Mercury, Total	EPA200.8	ug/L	Not Detected		0.5	2	9/16/2011
Nickel, Total	EPA200.8	ug/L	10		10	100	9/16/2011
Nitrate as NO3	EPA300.0	mg/L	194		1	45	9/15/2011
Nitrite as NO2-N	EPA300.0	mg/L	0.18		0.05	1.00	9/15/2011
Odor Threshold at 60 C	2150B	TON	1		1	3	9/15/2011
o-Phosphate-P	EPA300.0	mg/L	Not Detected		0.05		9/15/2011
Perchlorate	314	ug/L	Not Detected	E	4.0	6	9/21/2011
pH (Laboratory)	4500-H+B	STD. Units	7.5				9/15/2011

Seawater influence

mg/L: Milligrams per liter ug/L: Micrograms per liter PQL: Practical Quantitation Limit MCL: Maximum Contamination Level
H = Analyzed outside of hold time E = Analysis performed by External Laboratory; See External Laboratory Report attachments.

Lab Number: AA80211

Collection Date/Time: 9/15/2011 9:10
 Submittal Date/Time: 9/15/2011 13:05

Sample Collector: VAZQUEZ-VAREL
 Sample ID: 2700771-001

Sample Description: Springfield, Well

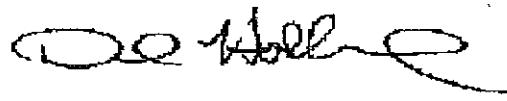
Analyte	Method	Unit	Result	Qual	PQL	MCL	Date Analyzed
Potassium	EPA200.7	mg/L	6.2		0.1		9/22/2011
QC Anion Sum x 100	Calculation	%	101%				9/23/2011
QC Anion-Cation Balance	Calculation	%	3				9/23/2011
QC Cation Sum x 100	Calculation	%	108%				9/23/2011
QC Ratio TDS/SEC	Calculation		0.70				9/27/2011
Selenium, Total	EPA200.8	ug/L	12		2	50	9/16/2011
Silver, Total	EPA200.8	ug/L	Not Detected		10	100	9/16/2011
Sodium	EPA200.7	mg/L	356		0.5		9/22/2011
* Specific Conductance (E.C)	2510B	umhos/cm	4146		1	900	9/16/2011
Sulfate	EPA300.0	mg/L	349		1	250	9/15/2011
Synthetic Organic Compounds		ug/L	Attached	E			9/20/2011
Thallium, Total	EPA200.8	ug/L	Not Detected		1	2	9/16/2011
* Total Diss. Solids	2540C	mg/L	2900		10	500	9/16/2011
Turbidity	180.1	NTU	Not Detected	H	0.05	5.0	9/20/2011
Volatile Org. Compounds (524)	EPA524	ug/L	Attached	E			9/21/2011
Zinc, Total	EPA200.8	ug/L	44		10	5000	9/16/2011

Sea water influence

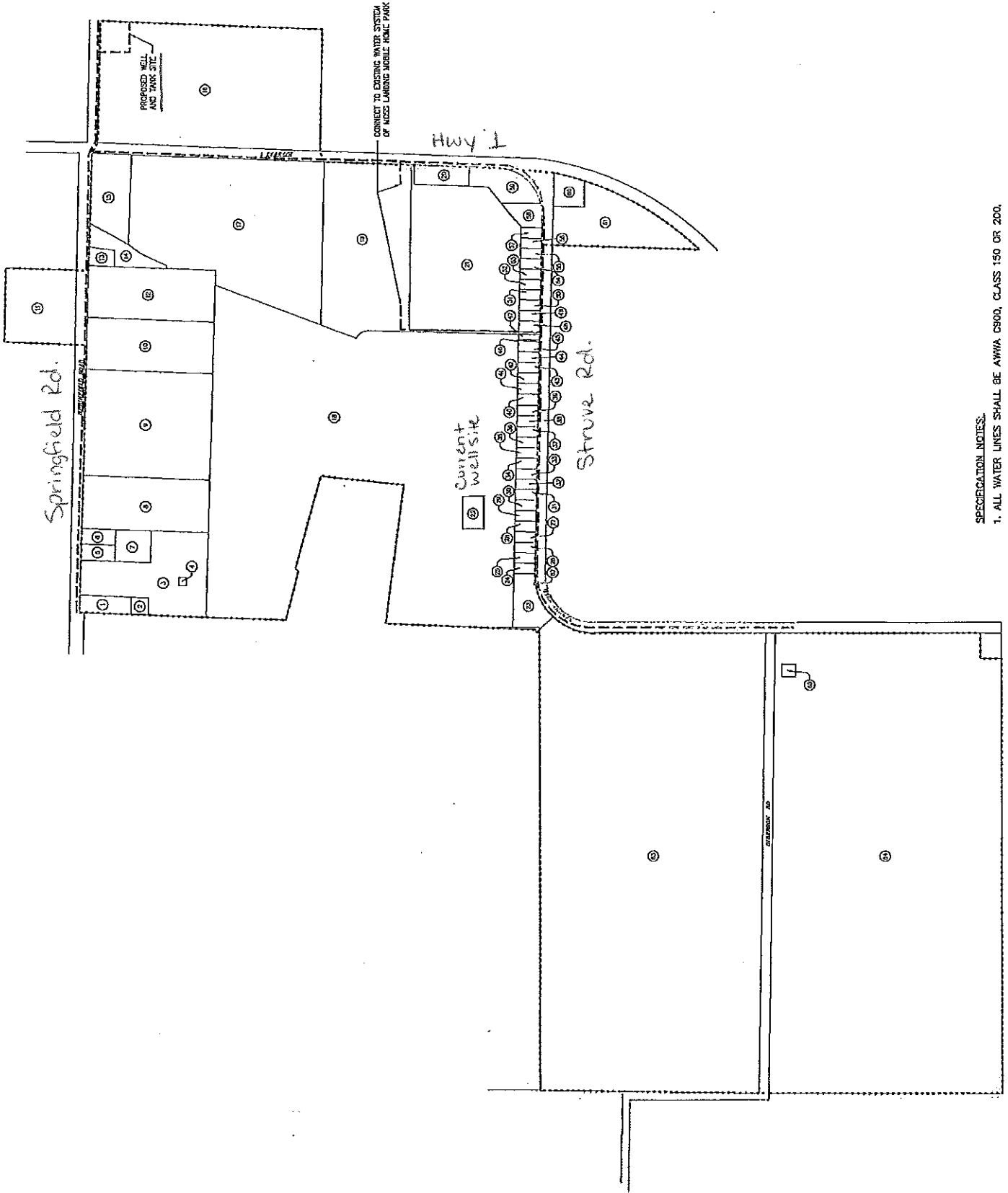
Mineral/salts and organics caused from agricultural or urban runoff.

Sample Comments:

Report Approved by:



David Holland, Laboratory Director



SPECIFICATION NOTES:

1. ALL WATER LINES SHALL BE AWWA C900, CLASS 150 OR 200.
2. BOLTED STEEL WATER TANK SHALL BE AWWA D103.
3. ALL CONSTRUCTION SHALL BE IN ACCORDANCE WITH DISTRICT STANDARDS AND DEPARTMENT OF HEALTH SERVICES REQUIREMENTS.

Highway 1

N

UltraMar

J&S
Surplus

Main Line

67

65

63

61

59

57

55

53

51

49

45

43

41

39

37

35

33

31

29

27

25

23

21

19

17

15

13

11

9

7

120A

122

124

124

124

Main Line

Struve Road

Main Line

- * - Fire Hydrants
- * - Routine Samples
- * - Repeat Samples

Well
Site

Main
Line

Struve Road